



# Walking the Path Together

Helping homeless  
pregnant women and  
their children find their  
way to a new life.



OUR LADY'S INN  
MATERNITY HOMES

2019 ANNUAL REPORT



## Letter from the Chairman of the Board



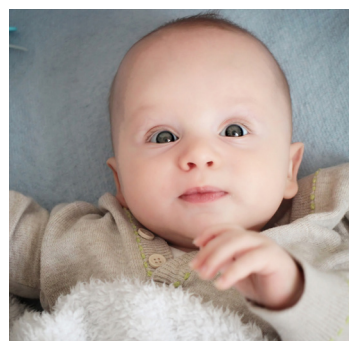
As Chairman, I am keenly aware of the many women in our community fighting personal battles that most will never understand; pregnant women, abandoned and homeless, looking for refuge as they face an uncertain future. We see these frightened women, we hear their stories and with your help, we care for them.

In 2019, Our Lady's Inn provided refuge to 128 pregnant women and their 122 children. Under our roof they found safety, encouragement and nourishment for mind and body. They discovered hope for a brighter future - a future made even brighter with the opportunity for healing from past abuses and trauma. After more than a year of preparation and training, the Agency has adopted a Trauma Informed Care approach to our service delivery methodology; an approach based in the knowledge and understanding of trauma and its far-reaching implications for physiological, emotional and behavioral health. We have lovingly dubbed this new approach "Living the Mission", as it provides a new depth to our work of "providing shelter and hope for a new life through humble acts of love" allowing it to be more impactful and life altering.

The Fiscal Year 2019 ended with Our Lady's Inn in a sound position. The Executive Management Team, along with the Board of Directors, worked diligently in their efforts to secure a broad base of funding resources necessary to ensure that life-saving work is carried out. We have placed great focus on growing our Endowment Fund through planned giving efforts which will help secure our future.

I recognize the contribution of each staff person, volunteer, and Board member and thank them for their tireless efforts. I am so grateful for our donors who have so generously supported the work of Our Lady's Inn. Together, we work to carry out the mission of supporting pregnant, homeless women and their children.

Chairman of the Board



## The Journey through Our Lady's Inn

### The Need

Since 1982, OLI has provided a home for pregnant women and their dependent children who are homeless and in crisis.



**530**  
**CALLS**  
Received for  
help in 2019

### Welcome

Mom is welcomed into residential program. She's established in a private room and her immediate basic needs are met.

*"From the moment I walked through the door, I had a team of supporters and I didn't even know it."*

- Marianne

### Finding Support

- Mom enters OLI's residential program.
- Works with case manager, nurse, counselor and child advocate to take actions necessary to achieve her goals.
- She meets with her support team to determine her hopes and goals for herself and her children.



**18,232**  
Nights of shelter  
and days in care

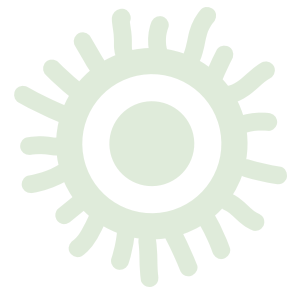
## Annie's Journey

While expecting her child, Annie was not only experiencing a high-risk pregnancy and stress-induced seizures, but also abandonment by her boyfriend. It was during a hospital stay that she learned about Our Lady's Inn. She was encouraged that her other children could come with her, though she feared what it might be like.

Annie lived at Our Lady's Inn for four months and then joined our 2-year Aftercare Program. She continued to work two jobs, while saving for an apartment. Her case manager assisted her in applying for housing programs that helped secure a safe place to live for Annie and her children.

Once she had stable housing and a good job, Annie knew it was time to continue her education and career! She completed her Bachelor's Degree in social work, which she uses in her job at a local nonprofit helping expectant mothers. She often refers her clients to Our Lady's Inn! She is also currently earning her Master's Degree in social work.

Today Annie lives in her own townhome with her children and knows that she can call Our Lady's Inn any time. She says that "the Aftercare Program is amazing - I can't say enough about it." We know this is just the beginning for Annie and her family, and we are honored to be a part of her journey.



**"The Aftercare program is amazing - I can't say enough about it."**

## Preparing for Self-sufficiency

- Workshops and multi-session trainings covering topics such as parenting, pre-natal and post-natal care, nutrition, employment readiness, educational preparedness and sober living.
- Transportation is provided for moms to get to and from medical appointments, jobs, school, childcare, 12 step meetings, and other resources in the community.
- Aftercare support offers an extended two year service providing material supports, continued case management, advocacy, and housing referrals.



**128**  
Moms  
Served

**93**  
Kids  
Served

**99,720**  
Transportation Miles



**37,179**  
Meals Provided



**12,431**  
Volunteer Hours



## 2019 OUR LADY'S INN AUDITED FINANCIALS

### Statement of Assets and Liabilities

	2019	2018
<b>ASSETS</b>		
Cash and cash equivalents	898,962	1,051,801
Operating investments	703,348	688,004
Contributions and grants receivable	98,918	85,193
Prepaid expenses	4,158	22,543
Property and equipment, net	1,605,640	1,687,997
Endowment investments	1,685,302	1,357,631
Cash held for others	5,065	5,082
<b>Total Assets</b>	<b>5,001,393</b>	<b>4,898,251</b>
<b>LIABILITIES AND NET ASSETS</b>		
<b>Liabilities</b>		
Deferred revenue	5,904	-
Accrued liabilities	180,150	186,230
<b>Total Liabilities</b>	<b>186,054</b>	<b>186,230</b>
<b>Net Assets</b>		
Without donor restrictions		
Undesignated	3,007,550	3,193,177
Board designated endowment	756,048	609,050
	3,763,598	3,802,227
With donor restrictions	1,051,741	909,794
<b>Total Net Assets</b>	<b>4,815,339</b>	<b>4,712,021</b>
<b>Total Liabilities and Net Assets</b>	<b>5,001,393</b>	<b>4,898,251</b>

<b>SUPPORT AND REVENUE</b>	2019	2018
Government grants	757,462	781,110
Donations	1,695,415	2,936,817
Investment income	353,979	-16,363
Tenant rents	3,800	4,001
Thrift shop	95,637	89,899
Other	6,970	10,496
<b>Total Support and Revenue</b>	<b>2,913,263</b>	<b>3,805,960</b>
<b>EXPENSES</b>		
Program services	2,136,865	2,087,843
Management and general	313,398	270,129
Fundraising	359,682	376,655
<b>Total Expenses</b>	<b>2,809,954</b>	<b>2,734,627</b>
<b>Increase (Decrease) in Net Assets</b>	<b>103,318</b>	<b>1,071,333</b>



## The Journey through Our Lady's Inn continued

### 29 BABIES Born in 2019

Amari	Damario	Jesiah	Maxwell
Aminah	Dallas	Joevon	Mecole
Antonio	Darian	Issabella	Raelynn
Arianna	Darius	Jacoby	Reyna
Aryia	Darren	Jaxon	Ruka
Assitan	Destiny	Lamont	Trenton
Ava	Elliana	Mandelyn	
Cornell	Giavonna	Marquis	



*"All the staff motivated me to be the mother I was meant to be."*

- Ashley

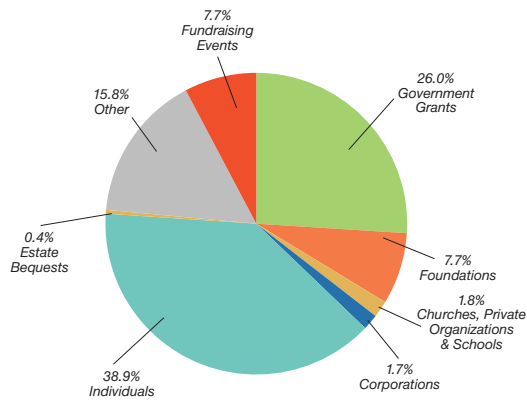


**6 lbs. 8 oz.**  
Average Birth Weight

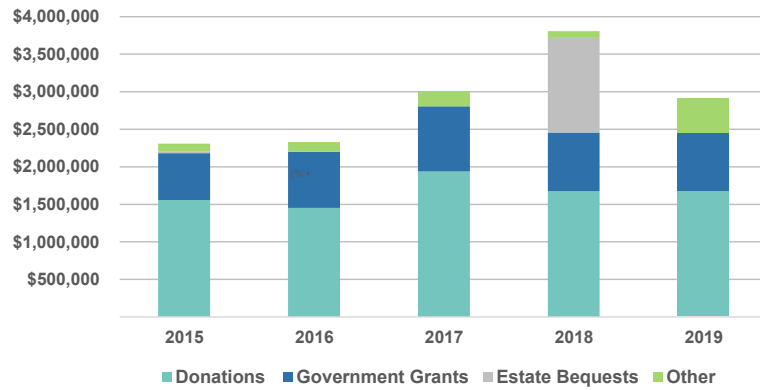


**37 weeks 3 days**  
Average Gestational Age

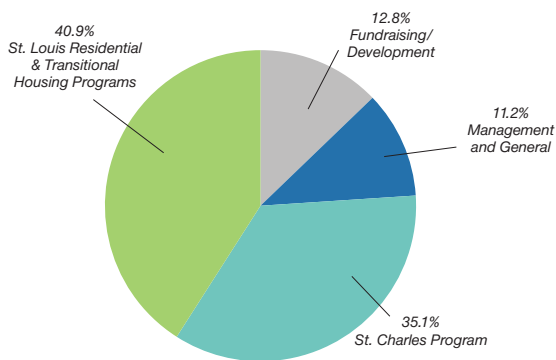
2019 Revenue Dispersion



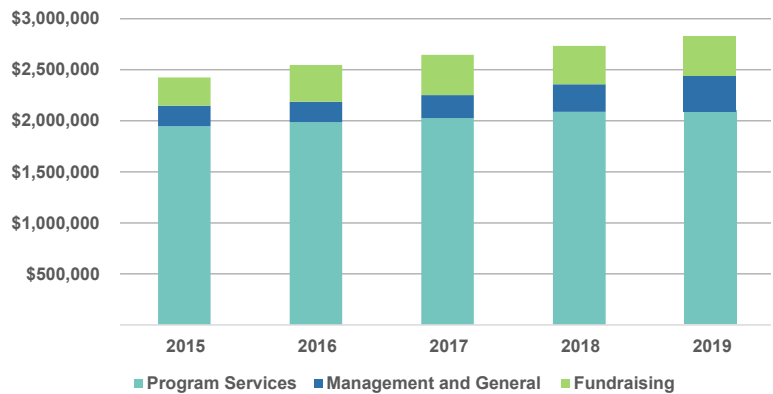
5 - Year Income Trend



2019 Expense Dispersion



5 - Year Expense Trend



## Road to Self-Sufficiency



**90%**  
Join Aftercare

*"Our Lady's Inn saved my life. I had nowhere to go, and they took me in. They showed me the light I had let go. They encouraged me so much, I felt I could not disappoint them or myself. This shelter, with its classes, social workers, therapists and others willing to share their stories, motivated me to be the mother I'm meant to be. I'm grateful for all the lessons I learned. This place will forever be in my heart."*



Our Lady's Inn is accredited by:



Our Lady's Inn is rated by:



---

## Our Lady's Inn Affiliates



---

## Our Lady's Inn Partners



[www.ourladyinn.org](http://www.ourladyinn.org)

**St. Louis** 314-351-4590 • 4223 S. Compton • St. Louis, MO 63111  
**St. Charles** 636-398-5375 • 3607 Highway D • Defiance, MO 63341  
**Administrative Offices** 314-736-1544 • 8790 Manchester Road  
Suite 202 • St. Louis, MO 63144

Guided by our Mission, Our Lady's Inn provides pregnant women and their children shelter and hope for a new life through humble acts of love.

